

**CLASS – IX**

**SUMMER HOLIDAYS HOMEWORK-2024**

**ENGLISH**

**General Instructions:**

- Students need to prepare the project on the topic assigned to their roll-number group.
- The project is to be prepared as per the instructions detailed below.
- The “Creative Writing” section should be done by all the students in their respective subject notebooks.
- **Date of Submission:** 18<sup>th</sup> June, 2024

**ROLL NO. 1-10**

**PORTFOLIO**

All over the world, rivers are valuable, often sacred, cultural and practical assets. They are a defining feature of human settlements, exploited for millennia as a source of drinking water, food, irrigation, waste disposal, power, navigation, defense and even inspiration. But they are drying up, not flowing as we see in the poem ‘Brook’. Craft a portfolio embellished with an attractive cover page showcasing essential details like your Name, Roll No. and Class/Sec, alongside an index, introduction, and acknowledgment pages.

**ROLL NO. 11-20**

**Article Writing**

Delve into composing an article advocating water conservation and make beautiful five book marks on the theme ‘ Every drop counts.’

**ROLL NO. 21-30**

**Poster Making**

Design a captivating poster centered on the theme ‘Every Drop Counts’ and an article on the topic ‘Climate Change’

**ROLL NO . 31 ONWARDS**

**Web Chart**

Investigate and document the water saving initiatives of any two G20 nations and present the findings in a visually appealing web chart format and Craft a self –composed poem on the theme ‘Conserve Water’.

**Magazine:**

Prepare a 'Magazine on Andaman and Nicobar Islands' on A4 size sheets only with the content pages given below: a) Cover Page b) Content Page c) Introduction d) Features/Population /Climate e) People's dress / Occupation f) Food crops grown/ Dishes g) Art Forms h) Eminent Personalities i) Festivals/Fairs j) Tourism - Places one can visit, how one will reach (air/rail/road)

**Literary Devices:**

Given below is a list of literary devices. Select any three poems from your textbook and highlight the presence of the listed literary devices with suitable examples.

- Simile
- Metaphor
- Personification
- Irony
- Repetition

- Hyperbole
- Allusion
- Apostrophe
- Paradox
- Onomatopoeia

## हिंदी

### General Instructions:

#### खंड अ

- Roll number-wise topics have been assigned to students.
- Students need to prepare the project on topic assigned to their roll-number group.
- The project is to be prepared as per the instructions detailed below.

#### खंड ब

- Questions of this section are to be done by all the students in your Hindi notes register.
- जमा कराने की तिथि - 19<sup>th</sup> June, 2024

### खंड-अ

अंदमान मलयालम भाषा के हांदुमन शब्द से आया है जो हिन्दुओं के भगवान हनुमान शब्द का परिवर्तित रूप है। निकोबार शब्द भी इसी भाषा से लिया गया है जिसका अर्थ होता है- नग्न लोगों की भूमि। बंगाल की खाड़ी में बसा निर्मल और शांत अंडमान पर्यटकों के मन को असीम आनंद की अनुभूति कराता है। यह भारत का एक लोकप्रिय द्वीप समूह है। अण्डमान और निकोबार द्वीपसमूह भारत का एक केन्द्र शासित प्रदेश है। ये बंगाल की खाड़ी के दक्षिण में हिन्द महासागर में स्थित है। अण्डमान और निकोबार द्वीप समूह लगभग 572 छोटे बड़े द्वीपों से मिलकर बना है जिनमें से सिर्फ कुछ ही द्वीपों पर लोग रहते हैं। इसकी राजधानी पोर्ट ब्लेयर है। अंडमान में सुंदर सागर तट, यादों से जुड़े खंडहर और विभिन्न दुर्लभ वनस्पतियाँ हैं। समुद्री जीव और जैव वनस्पतियों, इतिहास और जल संबंधी खेलों में रुचि रखने वाले पर्यटकों को यह द्वीप बहुत पसंद आता है। अरब सागर में स्थित 'लक्षद्वीप' भारतीय उपमहाद्वीप का हिस्सा है। 'लक्षद्वीप' का मलयालम और संस्कृत में मतलब होता है 'लाखों द्वीप'। अपने नाम के अनुसार ही यह द्वीप बहुत खूबसूरत है जिसे देखने हर साल दुनिया भर से सैलानी आते हैं। यहाँ के अन्य प्रमुख पर्यटन स्थलों में उन्न मस्जिद, अगात्ती, बनगारम, कलापेनी, कादमत, बंगारम द्वीप समूह, कलपेनी द्वीप समूह, मिनीकॉय द्वीप समूह, कदमत द्वीप समूह, अगत्ती द्वीप समूह, अनद्रोथ द्वीप समूह, बित्रा द्वीप समूह, पिट्टी पक्षी अभयारण्य आदि काफी प्रसिद्ध हैं।

### अंदमान एवं निकोबार द्वीपसमूह



### लक्षद्वीप



**अनुक्रमांक के अनुसार दिए गए परियोजना कार्य को आकर्षक तथा रचनात्मक रूप में तैयार कीजिए :-**  
**अनुक्रमांक 01-10**

‘लक्षद्वीप’ की संस्कृति और लोक नृत्य का वर्णन करते हुए एक स्कैपबुक का निर्माण कीजिए।

**अनुक्रमांक 11-20**

‘लक्षद्वीप’ में मनाए जाने वाले त्योहार और मुख्य भोजनों पर आधारित आकर्षक चित्र सहित एक विवरणिका (Brochure) तैयार कीजिए।

**अनुक्रमांक 21-30**

अपने मित्र को ‘अंदमान एवं निकोबार द्वीपसमूह’ के पर्यटन स्थलों से परिचित कराने के लिए आकर्षक पोस्टर का निर्माण कीजिए।

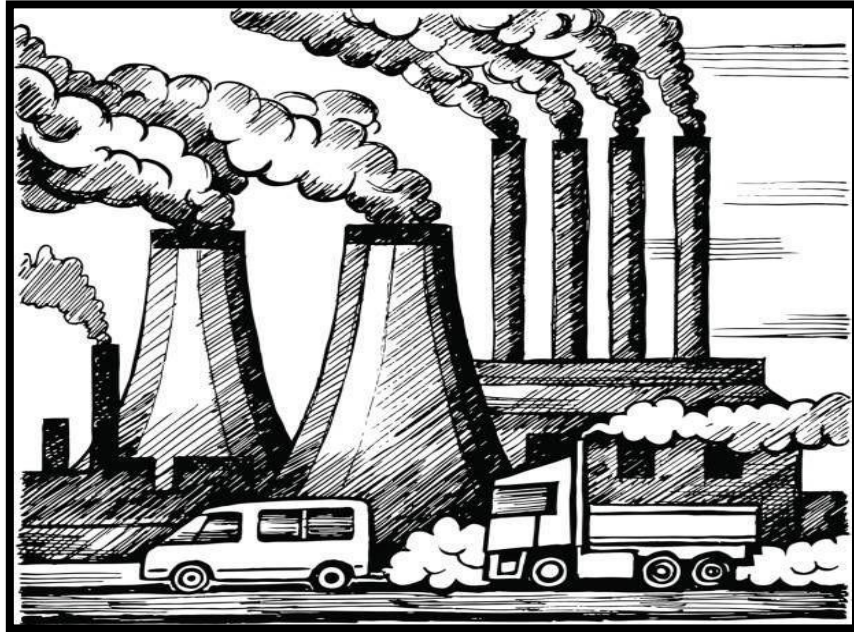
**अनुक्रमांक 31-40**

‘लक्षद्वीप’ की संस्कृति का वर्णन करते हुए एक स्कैपबुक का निर्माण कीजिए।

### **खंड ब**

**निम्नलिखित ग्रीष्मावकाश कार्य हिंदी उत्तर पुस्तिका के व्याकरण भाग में साफ़ एवं सुंदर लेख में कीजिए :-**

- 1 डेंगू मलेरिया के प्रकोप से बचाव हेतु लोगों में जागरूकता बढ़ाने के लिए स्वास्थ्य मंत्रालय और स्वयं के बीच हुई बातचीत को संवाद के रूप में (100) शब्दों में लिखिए।
- 2 अपने विद्यालय में आयोजित होने वाली साइबर सुरक्षा कार्यशाला संबंधी जानकारी विद्यार्थियों तक पहुँचाने के लिए राहुल और संजय के मध्य संवाद को (100) शब्दों में लिखिए।
- 3 दिए गए चित्र को ध्यान से देखकर अपने मन में उभरे विचारों को अपनी भाषा में (100) शब्दों में प्रस्तुत कीजिए :-



## FRENCH

### General Instructions:

- Students to make an A4 size Project given in Q2 (as per the instruction given below)
- Assignment questions to be done in French notes register by all students.
- **Date of submission:** 21<sup>st</sup> June, 2024

- Q1. **Recipe Booklet:** Compile a booklet of any five French and Indian cuisines. Include ingredients, step- by- step cooking instructions using Impératif and mouthwatering photos. Share personal anecdotes, cooking tips, or serving suggestions to make your recipe booklet more engaging and informative. You can also include fun facts about the ingredients or origin of the dishes to educate and entertain your readers.
- Q2. Make a project on the history of tribal inhabitants of Andaman and Nicobar Islands and find out 20 interesting facts about the people and Islands of Andaman and Nicobar. Make the project with illustrative images on A4 size sheets. The presentation should be creative and beautiful.

### Assignment: (Do the assignment in your French register)

Q1. Invitez votre ami(e) pour le mariage de votre sœur. Rédigez cette invitation. (30-35 mots)

Q2: Décrivez cette image à l'aide des mots suivants: (30-35 mots)  
(petit enfant, cheveux, lunettes, nez )



Q3: Mettez en ordre le dialogue et récrivez :

- C'est quel film ?
- À six heures du soir. Au cinéma « SVR ».
- D'accord ! A six heures ! Au revoir !
- Le film s'appelle « Cars ». C'est un film animé. Il est très amusant.
- Au revoir !
- Bonjour Anne ! Tu viens voir un film avec moi ce soir ?
- Ah oui ! J'aimerais voir ce film. A quelle heure commence-t-il ?



## संस्कृत

**Date of submission:** 27<sup>th</sup> June, 2024

1. अण्डमान-निकोबारद्वीपेभ्यः सम्बद्धानां कस्यापि दश रोचकतथ्यस्य ब्रोशरं सज्जीकरोतु।

यथा –

i) २० रुप्यकेषु जङ्गलभागः केवलं अण्डमानद्वीपस्य एव अस्ति ।



ii) अण्डमानदेशे नारिकेलकङ्कणाः प्रचुररूपेण दृश्यन्ते । एते स्थले दृश्यमानाः बृहत्तमाः कङ्कणाः सन्ति, येषां दीर्घता १ मीटर् यावत् भवितुम् अर्हति । तेषां प्रियः आहारः नारिकेलः अस्ति, ते अपि मुखेन नारिकेलस्य दृढं शंखं भङ्क्ते।



भारतस्य लघुतमः संघराज्यः लक्षद्वीपः ३६ द्वीपैः युक्तः द्वीपसमूहः अस्ति यस्य क्षेत्रफलं ३२ कि.मी. अयं एकजिल्लासङ्घप्रदेशः अस्ति, अत्र १२ द्वीपाः, त्रीणि चट्टानानि, पञ्च डुबन्तः तटाः, दश निवसन्तः द्वीपाः च सन्ति । 1. अस्य द्वीपानां विस्तारः ३२ वर्गकिलोमीटर् अस्ति । राजधानी कावरट्टी अस्ति तथा च एतत् यूटी-देशस्य प्रमुखं नगरम् अपि अस्ति ।

2. लक्षद्वीपस्य १० प्रसिद्धपर्यटनस्थलानां विषये सूचनां दत्त्वा चित्रैः सह ब्रोशरं सज्जीकरोतु ।

यथा –

i) लक्षद्वीपस्य मुख्यं आकर्षणं मिनीकोयद्वीपः -

लक्षद्वीपस्य एकः मुख्यः आकर्षणः मिनीकोयद्वीपः अस्ति, यः लक्षद्वीपस्य ३६ लघुद्वीपेषु अन्यतमः अस्ति। मिनीकोयः स्थानीयभाषायां मालिकु इति नाम्ना प्रसिद्धः इति व्याख्यातव्यम्। मिनीकोयद्वीपः कोचीनतटतः प्रायः ४०० कि.मी.दूरे स्थितः अस्ति ।



- ii) लक्षद्वीपस्य प्रसिद्धं पर्यटनस्थलं अगट्टीद्वीपम्  
अगट्टीद्वीपः लक्षद्वीपे भ्रमणार्थं रोमाञ्चकारीषु स्थानेषु अन्यतमः अस्ति यः प्रवालपट्टिकानां मनोहरसौन्दर्यस्य कृते प्रसिद्धः अस्ति ।



3. A-4 SIZE पत्रे स्वर संधिः / व्यंजन संधिः सन्धिनियमानां नामभिः सह सूचीं कुर्वन्तु ।

### MATHEMATICS

#### General Instructions:

- Mathematics Holidays Homework has two sections:  
- Section 1 is Model making; students to check their class roll numbers when making models.  
- Section 2 is an assignment; Assignment to be done in mathematics register (for all the students).
- **Date of Submission:** - 26<sup>th</sup> June, 2024 (both Section 1 and Section 2)

#### **Section 1:**

##### **ROLL NO. 1-8**

1. Make a 3D model to verify the identity  $(a + b)^3$

Hint: <https://youtu.be/MRZB2dvQzeY?feature=shared>

##### **ROLL NO. 9-17**

2. Make a spin wheel on laws of exponents (working model)

Hint: <https://youtu.be/OjX9vDgncCo?feature=shared>

##### **ROLL NO. 18-26**

3. Make a 3D model on algebraic expressions.

Hint: <https://youtu.be/OJ9bUUBoT4I?si=eODgmoiQ8LyjJ3DI>

##### **ROLL NO. 27 ONWARDS**

4. Make a 3D model for square root spiral using thread.

Hint: <https://youtu.be/JZghiZKH5w?feature=shared>

#### **Section 2:**

Q1. Insert any two irrational numbers between  $\frac{1}{4}$  and  $\frac{2}{5}$ .

Q2. Represent  $\sqrt{7.5}$  on a number line.

Q3. Find the value of  $\frac{(81)^{\frac{1}{3}}}{(81)^{\frac{1}{12}}}$

- Q4. a) Let x and y be rational and irrational numbers, respectively. Is  $x + y$  necessarily an irrational number? Give an example in support of your answer.  
 b) Let x be rational and y be irrational. Is  $xy$  necessarily irrational? Justify your answer by an example.

Q5. Show that  $\frac{1}{3-2\sqrt{2}} - \frac{1}{2\sqrt{2}-\sqrt{7}} + \frac{1}{\sqrt{7}-\sqrt{6}} - \frac{1}{\sqrt{6}-\sqrt{5}} + \frac{1}{\sqrt{5}-2} = 5$

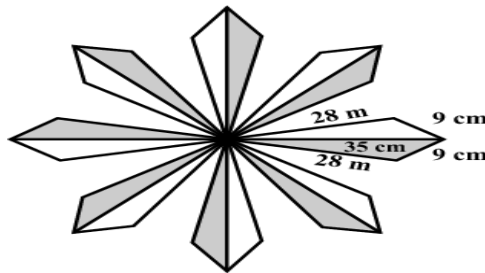
- Q6. a) If both a and b are rational numbers, then find the value of a in the following:

$$\frac{2+\sqrt{3}}{2-\sqrt{3}} = 7 - a\sqrt{3}$$

- b) Find the value of p and q in the following:

$$\frac{\sqrt{3}+\sqrt{2}}{\sqrt{3}-\sqrt{2}} - \frac{\sqrt{3}-\sqrt{2}}{\sqrt{3}+\sqrt{2}} = p + q\sqrt{6}$$

- Q7. i) If every side of a triangle is doubled, by what percentage is the area of the triangle increased?  
 ii) A triangular park has sides 120 m, 80 m and 50 m. A gardener has to put a fence all around it and also plant grass inside. How much area does he need to plant?
- Q8. The sides of a triangular field are 41m, 40 m and 9 m. Find the number of rose beds that can be prepared in the field, if each rose bed, on an average needs 900 cm<sup>2</sup> space.
- Q9. If each side of a triangle is doubled, then find the ratio of area of the new triangle thus formed and the given triangle.
- Q10. A floral design of a floor is made up of 16 triangular tiles. The sides of the triangle being 9cm, 28cm and 35cm. (Use  $\sqrt{6} = 2.45$ )  
 a) Find the total area of tiles.  
 b) Find the cost of polishing the tiles at the rate of 50 p per cm<sup>2</sup>.



## SCIENCE

### General Instructions:

- Homework has two sections:
- Section 1 is Model making; Students to check their class roll numbers when making models (Preferably a working model)
- Section 2 is an assignment; Assignment to be done in their respective subject notebooks.
- **Date of Submission:**
- Assignment (Section 2): 24<sup>th</sup> June, 2024
- Models (Section 1): 25<sup>th</sup> June, 2024

### **Section 1:**

#### **Models:**

S. No	TOPIC	ROLL NO.
1	Roller Coaster Model: Build a miniature roller coaster to demonstrate the concepts of motion such as velocity, acceleration and centripetal force.	1-8
2	Make a working model on 'Understanding Ecosystem Dynamics' (Related to SDG 15, SDG 2 and SDG 13)	9-16
3	Herbal Chemistry: "Unlocking the Secrets of Andaman's Medicinal Plants". -To identify and analyze the chemical compounds present in selected medicinal plants from the Andaman and Nicobar Islands and to study their bioactive properties. OR Particle Model of Matter: Create a working model to demonstrate the particle nature of matter. You can use different colored beads or marbles to represent atoms or molecules. Show how these particles are arranged differently in solids, liquids, and gases, and how they move relative to each other.	17-24
4	Balloon Rocket Car: Build a small car powered by a balloon (based on Newton's Third Law of Motion)	25-32
5	Make a working model on 'Recycling of Waste Water' (related to SDG 6 and SDG 3).	33 onwards

## PHYSICS

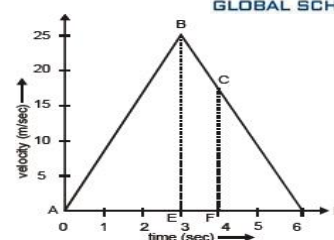
- Q1. A bus starting from rest moves with a uniform acceleration of  $0.1 \text{ m s}^{-2}$  for 2 minutes. Find (a) the speed acquired, (b) the distance travelled.
- Q2. A train is travelling at a speed of  $90 \text{ kmh}^{-1}$ . Brakes are applied so as to produce a uniform acceleration of  $-0.5 \text{ ms}^{-2}$ . Find how far the train will go before it is brought to rest.
- Q3. A trolley, while going down an inclined plane, has an acceleration of  $2 \text{ cm s}^{-2}$ . What will be its velocity 3 s after the start?
- Q4. The following table gives the data about motion of a car.

Time (h)	11.00	11.30	12.00	12.30	1.00
Distance (km)	0	30	30	65	100

Plot the graph.

- i) Find the speed of the car between 12.00 hours and 12.30 hours.
- ii) What is the average speed of the car?
- iii) Is the car's motion an example of uniform motion? Justify.



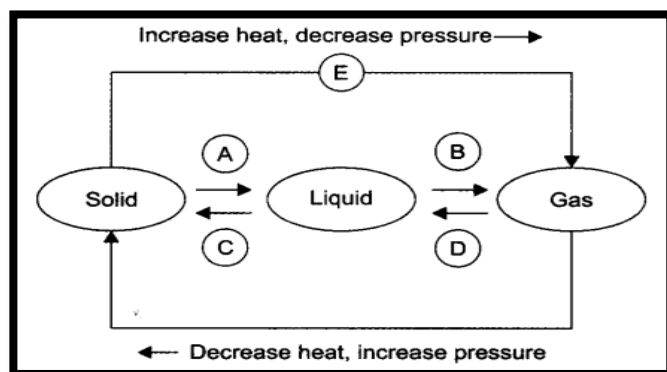


- Q5. Study the velocity-time graph and calculate.
- The acceleration from A to B
  - The acceleration from B to C
  - The distance covered in the region ABE
  - The average velocity from C to D
  - The distance covered in the region BCFE
- Q6. a) Differentiate between uniform linear and uniform circular motion.  
b) Write any four examples of uniform circular motion.  
c) Is uniform circular motion accelerated motion?
- Q7. Velocity-time graph for the motion of an object in a straight path is a straight line parallel to the time axis.
- Identify the nature of motion of the body.
  - Find the acceleration of the body.
  - Draw the shape of distance-time graph for this type of motion.
- Q8. Under what conditions can a body travel a certain distance, and yet its resultant displacement be zero?
- Q9. Arrange the following speeds in increasing order:
- an athlete running with a speed of 10 m/s
  - a bicycle moving with a speed of 200 m/min
  - a scooter moving with a speed of 30 km/h
- Q10. Name the quantity which is measured by the area occupied under the velocity-time graph.

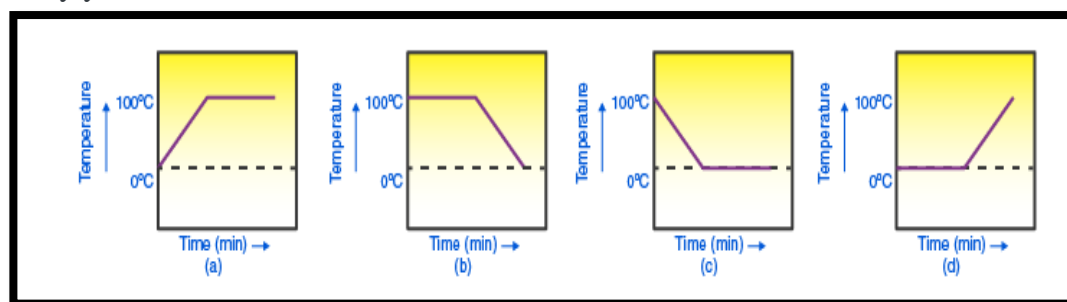
### CHEMISTRY

- Substance 'A' has high compressibility and can be easily liquefied. It can take up the shape of any container. Predict the nature of the substance. Enlist four properties of this state of matter.
- When 50 g of sugar is dissolved in 100 mL of water, there is no increase in volume. What characteristic of matter is illustrated by this observation?
- Classify the following into osmosis/diffusion
  - Swelling up of a raisin on keeping in water.
  - Spreading of virus on sneezing.
  - Earthworm dying on coming in contact with common salt.
  - Shrinking of grapes kept in thick sugar syrup.
  - Preserving pickles in salt.
  - Spreading of smell of cake being baked throughout the house.
  - Aquatic animals using oxygen dissolved in water during respiration.
- Explain what happens to the molecular motion and energy of 1 kg of water at 273 K when it is changed into ice at same temperature. How is the latent heat of fusion related to the energy exchange that takes place during this change of state?

5. Water as ice has a cooling effect, whereas water as steam may cause severe burns. Explain these observations.
6. Why do solids have a regular geometrical shape?
7. Name A, B, C, D, E and F in the following diagram showing change in its state.



8. Give reason for the following observations.
  - a) People wear cotton clothes in summer.
  - b) Water at room temperature can be considered a liquid.
  - c) Water in an earthen pot (matka) cool down during summer.
  - d) Temperature of a substance remains constant at its melting point or boiling point.
  - e) We can easily move our hand in air but to do the same through a solid block of wood we need a karate expert.
9. A student heats a beaker containing ice and water. He measures the temperature of the content of the beaker as a function of time. Which of the following figure would correctly represent the result? Justify your choice.



10. Based on the following characteristics distinguish in tabular form the behaviour of solid, liquid and gases.
  - a) Rigidity
  - b) Compressibility
  - c) Force of attraction
  - d) Density
  - e) Fluidity
  - f) Kinetic energy

## **BIOLOGY**

### **I. Worksheet**

(To be done in Biology registers by all the students)

#### **A. Give reason, why.**

1. Raisins and dry apricots swell up when placed in a bowl containing water for some time.
2. Chromatin and chromosomes are related to each other.
3. Lysosomes are known as 'scavengers of the cells'.
4. Plant cells possess large sized vacuole.
5. Roots of plants have mostly leucoplasts in them than chloroplasts.

#### **B. Name the organelles which show the analogy written as under.**

1. Transporting channels of the cells. \_\_\_\_\_
2. Digestive bag of the cell. \_\_\_\_\_
3. Storage sacs of the cells. \_\_\_\_\_
4. Control room of the cell. \_\_\_\_\_
5. Kitchen of the cell. \_\_\_\_\_
6. Powerhouse of the cell. \_\_\_\_\_
7. Packing & dispatching unit of the cell. \_\_\_\_\_

#### **C. Multiple choice questions.**

1. Which of the following is the basic structural and functional unit of all living organisms?
  - a) Tissue
  - b) Organ
  - c) Cell
  - d) Organism
2. Cell organelles without a cell membrane are:
  - a) Nucleus
  - b) Chloroplasts
  - c) Ribosomes
  - d) Golgi apparatus
3. The proteins essential for building the cell membrane are manufactured by:
  - a) Rough endoplasmic reticulum
  - b) Plasma membrane
  - c) Mitochondria
  - d) Golgi apparatus
4. Silver nitrate solution is used to study:
  - a) Endoplasmic reticulum
  - b) Nucleus
  - c) Golgi apparatus
  - d) Mitochondria

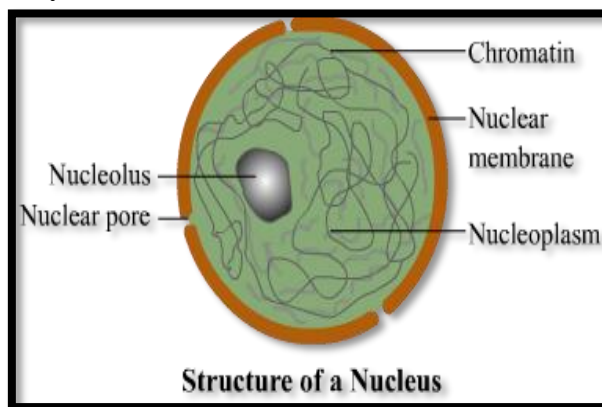
5. Plasmolysis in a plant cell is defined as:
  - a) Breakdown of plasma membrane in hypotonic medium
  - b) Shrinkage of cytoplasm in hypertonic medium
  - c) Shrinking of nucleoplasm
  - d) None of them
6. Amoeba acquires its food through this process:
  - a) exocytosis
  - b) endocytosis
  - c) plasmolysis
  - d) Both a & b
7. Cell arises from pre-existing cell was stated by:
  - a) Haeckel
  - b) Virchow
  - c) Hooke
  - d) Schleiden
8. What is the function of the cell membrane?
  - a) It provides structural support to the cell.
  - b) It regulates the passage of substances into and out of the cell.
  - c) It synthesizes proteins.
  - d) It stores genetic material.
9. The stain used to make temporary mount of human cheek cells is:
  - a) Safranin
  - b) Methylene blue
  - c) Xylene
  - d) Iodine
10. These contain their own DNA and ribosomes:
  - a) Mitochondria
  - b) Golgi apparatus
  - c) Plastids
  - d) Both a and c

#### **D. Higher Order Thinking Skills:**

1. A person with swollen gums rinses his mouth with lukewarm salt water and swelling of his gums decreases. This is because
  - a. The gums absorb the salt water solution.
  - b. The salt water solution lowers the temperature of the water in the gums.
  - c. The salt in the solution moves against the concentration gradient.
  - d. The water in the gums moves out due to high concentration of salt in the solution.

2. Ritika observed onion peel cells in the lab and could view the cell wall, cytoplasm and nucleus clearly. Suddenly her friend spilled a few drops of salty water on the slide having onion peel cells. She observes some changes in the cells after sometime
  - a. What changes would have been observed by Ritika?
  - b. Name the process that caused the changes in the cells.
  - c. Would there be similar changes observed, if she had prepared a slide of cheek cells?

3. Look at the diagram carefully:



- a. Which part of the above diagram can carry the 'hereditary material'?
  - b. Who discovered the nucleus for the first time?
  - c. Why is it called the 'control centre' of the cell?
4. If you are provided with some vegetables to cook, you generally add salt into the vegetables during the cooking process.
    - a. What happens to the vegetables after adding salt?
    - b. Which mechanism is responsible for the changes? Explain.
  5. Why does the skin of your mother's fingers shrink when she washes clothes for a long time?
    - a. What is responsible for these changes?
    - b. Explain the process in brief.

**E. Answer the following questions-**

- a. Differentiate between prokaryotic and eukaryotic cells
- b. Why are mitochondria often referred to as the powerhouse of the cell?
- c. Why is plasma membrane called selectively permeable membrane?
- d. Draw a well labeled diagram of an animal cell and a plant cell. Write three differences between the two.



### III. PORTFOLIO ACTIVITY (to be done by all the students on A4 sheets)

The Andaman and Nicobar Islands is characterized by its diverse and captivating landscapes, encompassing lush rainforests, pristine beaches, age old hills, and unique coral reefs. These islands serve as a testament to the intricate relationship between land and sea, with their marine ecosystems playing a crucial role in sustaining life both above and below the water's surface. The islands' geographical diversity offers a myriad of opportunities for exploration, adventure, and scientific study.

Environmental conservation in the Andaman and Nicobar Islands is a critical endeavor aimed at safeguarding the archipelago's rich biodiversity and fragile ecosystems.

- Write about the steps taken by the government and the people of Andaman and Nicobar islands for environment conservation.
- Write briefly about any two geographical landscapes found in the islands listing five flora species and five fauna species found there.
- Paste relevant pictures.



### **SOCIAL SCIENCE**

#### **GENERAL INSTRUCTIONS**

- Class-wise topics have been assigned for students.
- Students need to prepare a project on the topic assigned to their class.
- The project report to be prepared as per the instructions detailed below.
- Assignment Questions to be done in the Economics notes register by all students.
- **Date of Submission:** 21<sup>st</sup> June, 2024

#### **Project on -Disaster Management**

**IX-A:** Role of National Disaster Management Authority in the aftermath of a disaster with special reference to Andaman and Nicobar and Lakshadweep Islands.

**IX-B:** Gather information on the government recommendation for the contents of the home preparedness kit and state its importance.

**IX-C:** Response and recovery in India after the December 2004 earthquake in Andaman and Nicobar Islands and Indian Ocean tsunami.

**IX-D:** As Delhi is an Earthquake prone area what are the mitigation techniques used by the Government of India to minimize the risk.

Prepare a detailed project in **Social Science Activity-File** on the above-mentioned topic according to following headings:

The Project File should have the following (in the order mentioned)

1. **COVER PAGE**- showing project title, schools name, students name, class and section and academic session (2024-25)
2. **CONTENTS**- Table of contents with page number (approx...15 pages)
3. **PROJECT OVERVIEW**: Purpose, aim, methodology and experience while doing the project
4. **MAIN BODY**- Chapters with relevant headings. Students must include the relevant pictures and diagrams to support the project.
5. **CONCLUSION**- Summary and conclusions based on findings.
6. **BIBLIOGRAPHY**- should have the title, pages referred, author, publisher, year of publication and if a website, the name of the website with a specific link which have been used.

**NOTE:** Only eco-friendly material to be used for the PROJECT.

### Assignment

1. 'In a democracy, the majority of the people rule through their elected representatives.' Give reasons.
2. How elections in India are different from Mexico?
3. Explain the major features of democracy.
4. Why is Indian Ocean named after the country India? Give reasons.
5. Name the countries which share boundary with India and mark their locations on a political map of India.
6. Who was Robespierre? What measures were taken by him to bring equality in the French Society?
7. Explain triangular slave trade carried on during 18th and 19th century.
8. 'While the National Assembly was busy at Versailles drafting a constitution, the rest of France seethed with turmoil'. Elucidate.
9. Describe the effects of abolition of law of censorship on France.
10. Read the source given below and answer the following questions:  
In his Two Treatises of Government, Locke sought to refute the doctrine of the divine and absolute right of the monarch. Rousseau carried the idea forward, proposing a form of government based on a social contract between people and their representatives. In The Spirit of the Laws, Montesquieu proposed a division of power within the government between the legislative, the executive and the judiciary. The ideas of these philosophers were discussed intensively in salons and coffee-houses and spread among people through books and newspapers. These were frequently read aloud in groups for the benefit of those who could not read and write. France was a monarchy before the French revolution in 1789. Monarchy means France was ruled by a hereditary king. Louis XVI was the king of France. The first estate was clergy (priestly class). The second estate was nobles (rich people). The third estate was the commoners (poor and middle-class people). The first and second estates lived the luxurious life. These two estates were getting all the high-ranking jobs. People in third estate were less developed and poor. The third estate revolted against the king, clergy and nobles. This marked the beginning of French revolution.
  1. Write down Rousseau's ideas regarding government.
  2. During 1789 France was ruled by which monarchy?

3. Write a comparative study between Locke's views and Montesquieu's views on state.
4. Write a short note on the life style of first and second estate.
5. Write down the financial status of the third estate.

### **ARTIFICIAL INTELLIGENCE**

#### **General Instructions:**

- Roll number-wise topics have been assigned for students.
- AI holidays homework has two sections: -
  - Section 1 is Chart / Movie making; Students to check their class roll numbers when making models.
  - Sections 2 is an assignment
- Assignment Questions to be done in the Artificial Intelligence notes register.(for all the students)
- Project is compulsory for all the students.
- Date of Submission: 28<sup>th</sup> June,2024

#### **Section 1:**

##### **ROLL NO. 1-8**

1. Create a ppt / movie on 'Applications areas of AI'.

AI is a dynamic tool used across industries for better decision making, increasing efficiency and eliminating repetitive work. Students are required to collect information about various application areas of Artificial Intelligence like healthcare.

##### **ROLL NO. 9-17**

2. Create a colourful chart on 'Robotic Process Automation'.

Robotic process automation (RPA) is a software technology that makes it easy to build, deploy, and manage software robots that emulate humans actions. Students are required to collect information about:

- What is Robotic Process Automation ?
- How does it work?
- What are the major tools used in RPA?

##### **ROLL NO. 18-26**

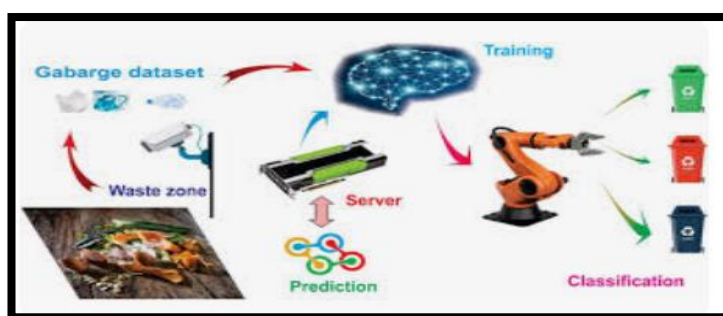
3. Create a colourful chart on 'How AI can help to improve agriculture in Andaman and Nicobar Island'. Students are required to collect information about:

- What challenges are faced by farmers in Andaman and Nicobar Islands?
- How AI applications can help in crop management?
- What is the role of AI-powered weather forecasting for better crop planning?

##### **ROLL NO. 27 ONWARDS**

4. Make a creative model on 'AI-Enhanced Waste Management System'(Related to SDG 12 and SDG 13)

AI-powered robots and machines equipped with sensors, cameras, and machine learning algorithms can identify, sort, and separate different types of waste materials more accurately and rapidly than manual sorting. This not only increases the efficiency of recycling processes but also reduces the risk of contamination. A picture of 'AI-Enhanced Waste Management System' is given below for reference:



## Section 2:

**Project:** Create a crossword puzzle on 'AI Inventions'.

### Worksheet:

Q1. Multiple Choice Questions:

1. Who is the father of Artificial Intelligence?

- a) Doug Cutting
- b) John McCarthy
- c) William S.
- d) Rasmus Lerdorf

2. Artificial Intelligence is a way of \_\_\_\_\_.

- a) making a computer
- b) a computer-controlled robot
- c) software think intelligently
- d) All of the above

3. What are the main goals of AI?

- a) To Create Expert Systems
- b) To Implement Human Intelligence in Machines
- c) Both A and B
- d) None of the Above

4. A major thrust of AI is in the development of computer functions associated with human intelligence.

- a) TRUE
- b) FALSE
- c) AI is not associated with human intelligence
- d) None of the Above

5. In which university the first demonstration of AI program run?
- a) Carnegie Mellon University.
  - b) Oxford University
  - c) Cambridge University
  - d) Stanford University
6. Which of the following areas cannot contribute to build an intelligent system?
- a) Neuron science
  - b) Math
  - c) Computer Science
  - d) Geology
7. A computer program with AI cannot answer the generic questions it is meant to solve.
- a) TRUE
  - b) FALSE
  - c) AI is not used to answer question
  - d) None of the Above
8. How many types of AI is there?
- a) 2
  - b) 3
  - c) 4
  - d) 5
9. Which of the following is not the type of AI?
- a) Reactive machines
  - b) Unlimited memory
  - c) Theory of mind
  - d) Self-awareness
10. AI Technique is a manner to organize and use the knowledge efficiently in such a way that \_\_\_\_\_.
- a) It should be perceivable by the people who provide it.
  - b) It should be easily modifiable to correct errors.
  - c) Both A and B
  - d) None of the Above



Q2. Answer the following questions:

- Define Artificial Intelligence.
- Who coined the word Artificial Intelligence?
- Design a rough layout of the floor plan of your dream's smart home.
- How AI helps in Netflix?
- What is Chatbot? How AI is used in Chabot?

### ART

#### General Instructions:

- Books pages are to be done in their sketch files.
- Craftwork needs to be made neatly by all students.
- Date of Submission:** 28<sup>th</sup> June, 2024

I am an artist: Art Book

Page - 28: Giraffe (Animal Study)

Page - 39: Paniharin (Poster/Water Colour)

Page - 71: Poster Designing– Smoking Kills (To be done in a Sketch File)

#### **Craft Work:**

In Lakshadweep handicrafts is a source of income for the inhabitants of Lakshadweep. Their handicrafts is famous all around the world. Make pottery using required materials.

